

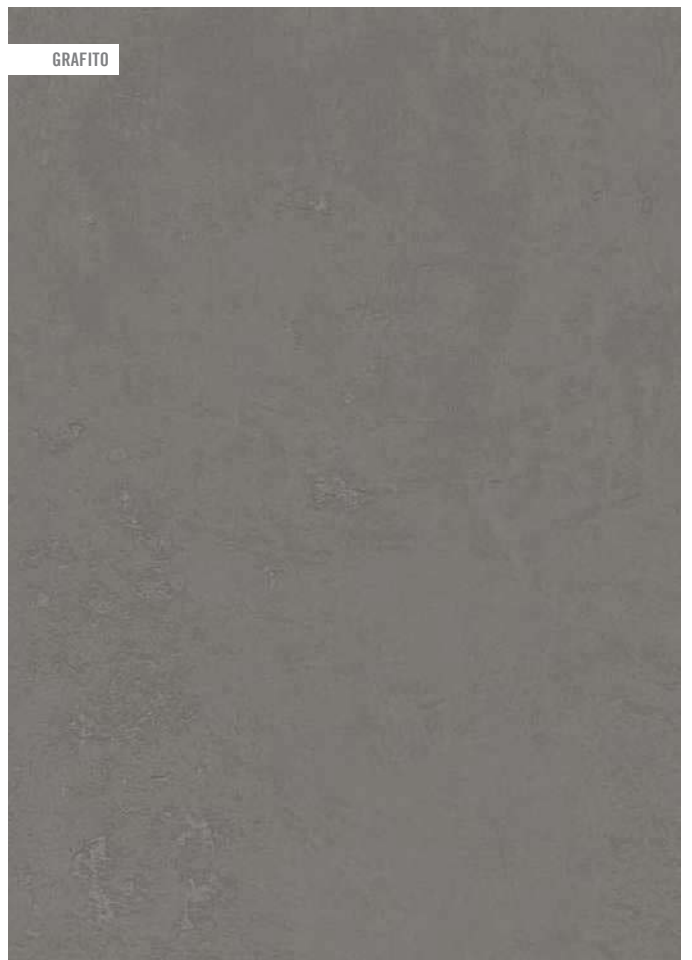
BLANCO



NATURAL



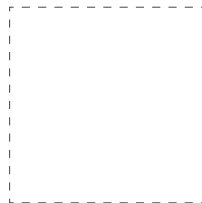
GRIS



GRAFITO



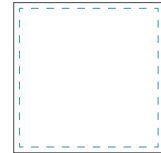
**120x120 cm.**  
47.2x47.2 inches  
**New York-R**  
**New York-R R10**  
**New York-R R12**  
**G.171**



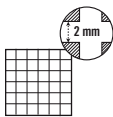
**80x80 cm.**  
31.5x31.5 inches  
**New York-R**  
**New York-R R10**  
**New York-R R12**  
**G.161**



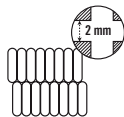
**60x120 cm.**  
23.6x47.2 inches  
**New York-R**  
**New York-R R10**  
**G.203**



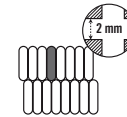
**60x60 cm.**  
23.6x23.6 inches  
**New York**  
**New York R10**  
**G.131**  
**59,3x59,3 cm**  
23.3x23.3 inches  
**New York-R**  
**New York-R R10**  
**G.172**



(\*) **30x30 cm approx**  
11.8x11.8 inches approx.  
**Mosaico New York**  
**Mosaico New York R10**  
**G.75**



(\*) **27x31 cm approx**  
10.6x12.2 inches approx.  
**Mosaico Nolita**  
**Mosaico Nolita R10**  
**G.94**



(\*) **27x31 cm approx**  
10.6x12.2 inches approx.  
**Mosaico Rockaway**  
**Mosaico Rockaway R10**  
**G.94**



(\*) **Enmallado**  
Meshmounted

El peldaño y el gradone pueden servirse con o sin rayado de hendidura. También disponibles en ángulo.  
The Step Tread and gradone can be sold with or without the ribbed notch. Angle is also available.

ANTIDESLIZANTE. Con el fin de dar una mayor seguridad en aquellas áreas transitables, cuyas condiciones de humedad y pendientes son mayores de lo habitual, hemos realizado las pruebas de ensayo según las normas: UNE EN 16165 (UNE 41901:2017 EX, UNE 41902:2017 EX, DIN 51130, DIN 51097, BS 7976-2:2002) y DCOF. Para más información, consultar nuestro departamento técnico.

SLIP RESISTANCE. With the purpose of providing increased safety in areas of pedestrian foot traffic where moisture and/or slopes are greater than normal, we have carried out tests according to the norms: UNE EN 16165 (UNE 41901:2017 EX, UNE 41902:2017 EX, DIN 51130, DIN 51097, BS 7976-2:2002) and DCOF. For more information on this, contact our Technical Department.



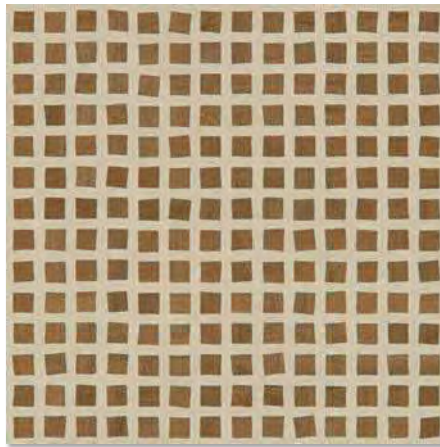
CL 3	CL 2
R 12	R 10
CL C	CL B
+ 0.42	+ 0.42
+ 36	+ 36
New York R12	New York R10

NEW YORK				CAJA / BOX				PALET / PALLET			
		FORMATOS	SIZE	PIEZAS / PIECES	M <sup>2</sup>	ML	KG	CAJA / BOX	M <sup>2</sup>	ML	KG
		27x31 cm Mosaico	10.6x12.2 inches	10	0,84	-	17,09	30	25,20	-	512,70
		30x30 cm Mosaico	11.8x11.8 inches	12	1,08	-	19,61	30	32,40	-	588,30
	10	59,3x59,3 cm	23.3x23.3 inches	3	1,055	-	24,30	40	42,20	-	972
	10	60x60 cm	23.6x23.6 inches	3	1,08	-	24,95	40	43,20	-	997,80
	11	60x120 cm.	23.6x47.2 inches	2	1,44	-	36,13	24	34,56	-	867
	10	80x80 cm	31.5x31.5 inches	2	1,28	-	29,40	42	53,76	-	1234,84
		120x120 cm	47.2x47.2 inches	1	1,44	-	36,125	38	54,72	-	1400
		G.916 9,4x59,3 cm.	3.7x23.3 inches	17	-	10,08	21,20	56	-	564,40	1187,20
		G.915 9,4x60 cm.	3.7x23.6 inches	17	-	10,20	21,47	56	-	571,20	1202,32
		G.916 9,4x60 cm (Rectificado)	3.7x23.6 inches	15	-	9	18,98	56	-	504	1062,88
		G.54 9,4x80 cm	3.7x31.5 inches	15	-	12	21,60	54	-	648	1166,40
		G.67 9,4x120 cm	3.7x47.2 inches	10	-	12	28,2	36	-	432	1015,2
		G.917 33x59,3 cm.	13x23.3 inches	1	-	0,59	5,27	-	-	-	-
		G.76 33x60 cm.	13x23.6 inches	1	-	0,60	5,30	-	-	-	-
		G.83 33x80 cm.	13x31.5 inches	1	-	0,80	6,5	-	-	-	-
		G.92 33x120 cm.	13x47.2 inches	1	-	1,20	10	-	-	-	-
		G.910 33x59,3 cm.	13x23.3 inches	1	-	0,59	6	-	-	-	-
		G.89 33x60 cm.	13x23.6 inches	1	-	0,60	6,10	-	-	-	-
		G.85 33x80 cm.	13x31.5 inches	1	-	0,80	7	-	-	-	-
		G.902 33x120 cm.	13x47.2 inches	1	-	1,20	13	-	-	-	-





80x80 cm. 31.5x31.5 inches

ATTICO  
LIVING ON TOP



Hudson-R Natural  
Hudson-R Natural R10  
G.161

NEW YORK				CAJA / BOX				PALET / PALLET			
		FORMATOS	SIZE	PIEZAS / PIECES	M <sup>2</sup>	ML	KG	CAJA / BOX	M <sup>2</sup>	ML	KG
	10	80x80 cm	31.5x31.5 inches	2	1,28	-	29,40	42	53,76	-	1234,84



